



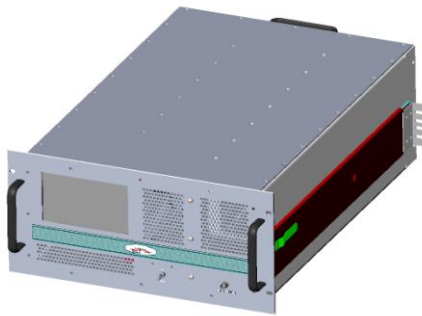
# PTWGA-6G18G-250

## 250W CW/GATED TWT Amplifier

### Traveler Wave Tube (TWT) Power RF Amplifier

The PTWGA-6G18G-250 is a TWT 250W (CW/GATED) RF Amplifier which covers frequency range from 6GHz to 18GHz.

This amplifier can achieve high efficiency operation with proven reliability as is designed with the robust engineering and employment of the most advanced devices and components. The amplifier comes with 1 year warranty including the TWT.



Parameter	Specification
<b>Electrical</b>	
Frequency Range	6-18GHz
Output Power	250W CW/Peak
Internal Pre-Amp.	Input level: 0dBm or less
Gain @ rated power	54dB
Input /Output Impedance	50 ohms(VSWR 2.0:1)
RF Input / Output Connectors	RF Input Type N Female / RF Output WRD650; Rear Panel
Modulation	AM / FM / Pulse
Noise Figure	≤ 35dB
Harmonics (nom.) @Rated Power	6-12GHz:-4 to-10dBc; 12-18GHz:-10 to-20dBc
Spurious	-50dBc max
Pulse Input	TTL. High=Beam-ON, Low=Beam-OFF, BNC conn.
Pulse Width	100nSec Min.
Rise/Fall time	20nSec
Pulse Delay	120nSec max.
PRF	150KHz max.
Duty Cycle	0-CW
Prime Power	220V AC +/-10%, 50/60 Hz, single Phase, 3 wires
<b>Mechanical</b>	
Configuration	Rack Mount 8.75"Hx19"Wx26.13"D
Cooling System	Air cooled ,self contained
Shock	MIL-STD-810C, method 516.2
Vibration	MIL-STD-810C, method 514.2
<b>Environmental</b>	
Temperature	0° to 45° C
Non operating	0° to 60° C
Humidity	95% without condensation
Altitude	10,000 feet

THESE SPECIFICATIONS ARE SUBJECT TO CHANGE WITHOUT NOTICE.



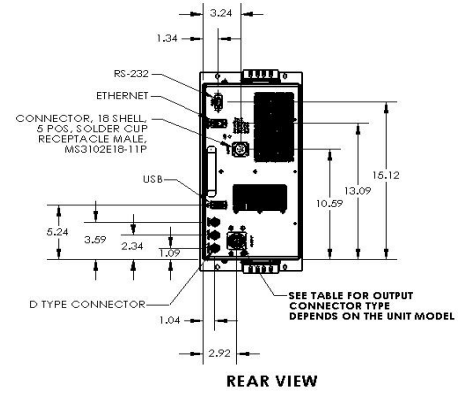
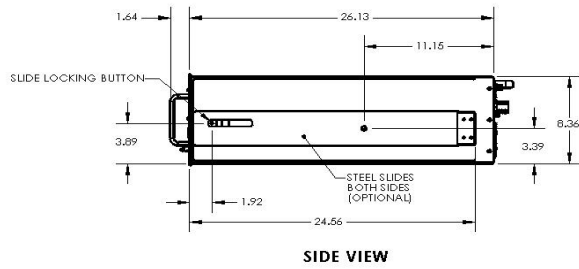
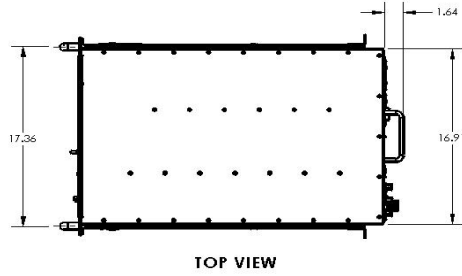
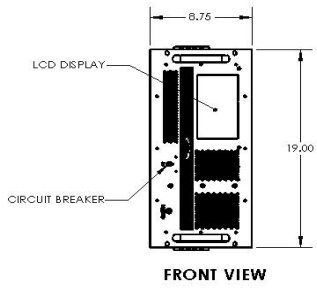
## **Features [Build-in]**

- High Voltage power supplies Over/Under Voltage & Over Currents Protection
- RS 232 & Ethernet Remote Control.
- RF Input / Output Connectors on the Rear Panel.
- Standby/RF\_ON, Elapsed Time Metering in hours.
- Filament/Beam Elapsed Time Metering in hours.
- Color TFT Touch screen Display with Front Panel Controls and Indicators.

## **OPTIONS**

- 001 VSWR Protection against output mismatch.
- 002 Alternate Prime Power (specify at time of order).
- 003 USB Remote Control.
- 004 Forward RF Sample Port Type N Female -50dBc nominal on the Rear Panel [standard] or Front panel.
- 005 Reflected RF Sample Port Type N Female -50dBc nominal on the Rear Panel [standard] or Front panel.
- 006 RF Input Connector on the Rear Panel [Standard], (Specify front or rear at time of order).
- 007 Internal Systems Diagnostics.
- 008 Filament/Beam Elapsed Time Metering in hours.
- 009 RF Safety Interlock, type BNC Connector.
- 010 Forward/Reflected Power Indication simultaneously on Front Panel display.

***THESE SPECIFICATIONS ARE SUBJECT TO CHANGE WITHOUT NOTICE.***



**PowerMax Innovation, Inc.**  
 1243 Reamwood Ave., Sunnyvale,  
 CA 94089 USA  
 Tel.: (408) 541-0888  
 Fax.: (408) 541-1886  
 E-Mail: [sales@pmaxii.com](mailto:sales@pmaxii.com)  
 Web: [www.pmaxii.com](http://www.pmaxii.com)

*THESE SPECIFICATIONS ARE SUBJECT TO CHANGE WITHOUT NOTICE.*